

SpiroConnect Settings and Database Tech Tip

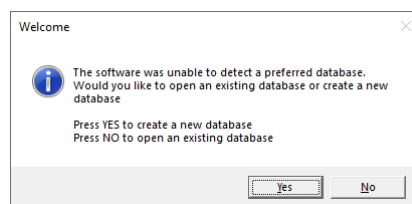
The settings within SpiroConnect Data Manager are set on a Windows user basis. When we install the software we attempt to copy the settings to all the users on the PC however occasionally this doesn't work due to local IT restrictions. Therefore, in those situations, each user will need to configure SpiroConnect Data Manager before they use SpiroConnect for the first time.

Please note that these settings should be classed as the minimum required to perform and interpret spirometry, however, you can adjust these to your clinical requirements as needed.

To launch SpiroConnect Data Manager please double-click on this icon located on the desktop.



1. When the software opens, you get a message stating that the software was unable to select a database. Choose No to open an existing database. If this doesn't appear go to step 3.



DEDICATION • INNOVATION • TRUST

Alliance House, Roman Ridge Road, Sheffield, S9 1GB Telephone: 0114 243 3896 Fax: 0114 243 3413

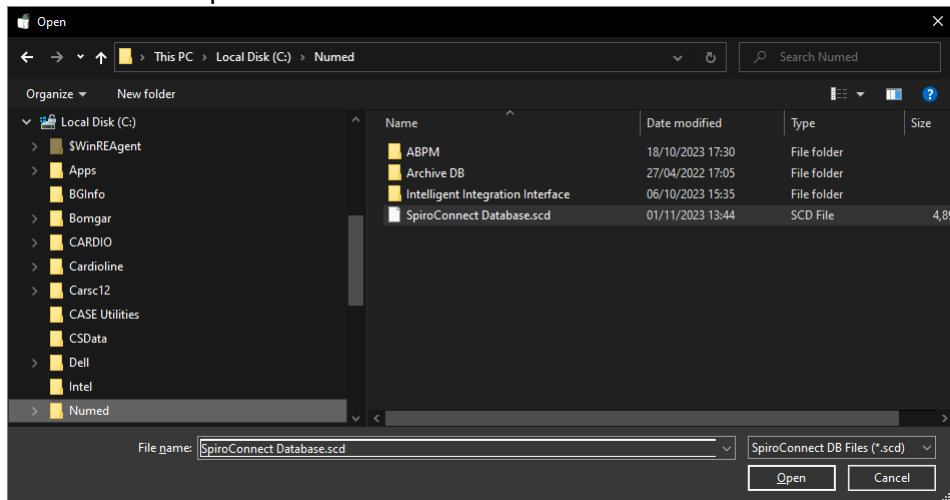


www.numed.co.uk



info@numed.co.uk

2. We would normally keep the database named SpiroConnect Database.scd in the default location chosen by the software however you can store this on a network drive as well. Once located select the database and click open



3. To access the configuration please click Settings



DEDICATION • INNOVATION • TRUST

Alliance House, Roman Ridge Road, Sheffield, S9 1GB Telephone: 0114 243 3896 Fax: 0114 243 3413

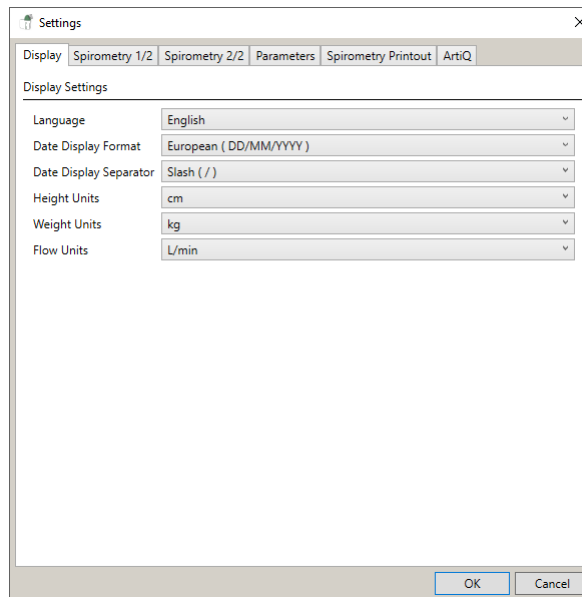


www.numed.co.uk



info@numed.co.uk

4. Configure the Display as shown



DEDICATION • INNOVATION • TRUST

Alliance House, Roman Ridge Road, Sheffield, S9 1GB Telephone: 0114 243 3896 Fax: 0114 243 3413

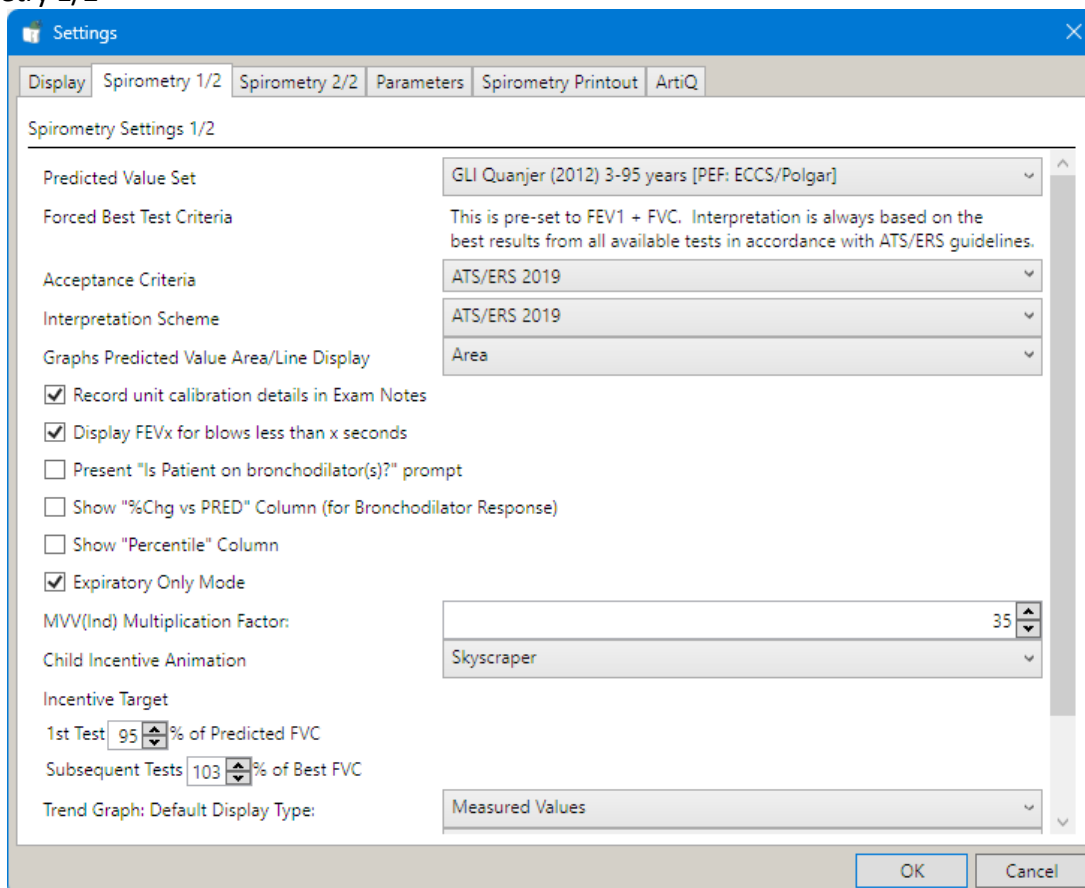


www.numed.co.uk



info@numed.co.uk

5. Spirometry 1/2



DEDICATION • INNOVATION • TRUST

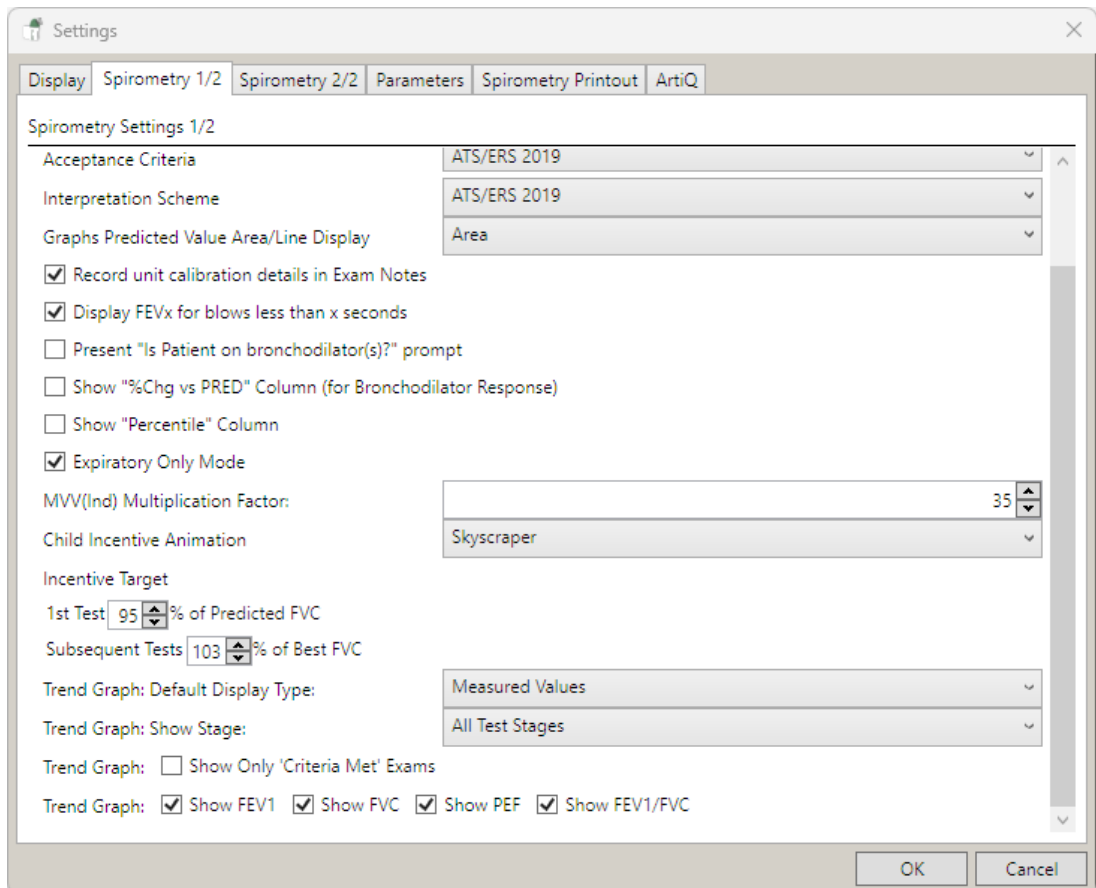
Alliance House, Roman Ridge Road, Sheffield, S9 1GB Telephone: 0114 243 3896 Fax: 0114 243 3413



www.numed.co.uk



info@numed.co.uk



DEDICATION • INNOVATION • TRUST

Alliance House, Roman Ridge Road, Sheffield, S9 1GB Telephone: 0114 243 3896 Fax: 0114 243 3413

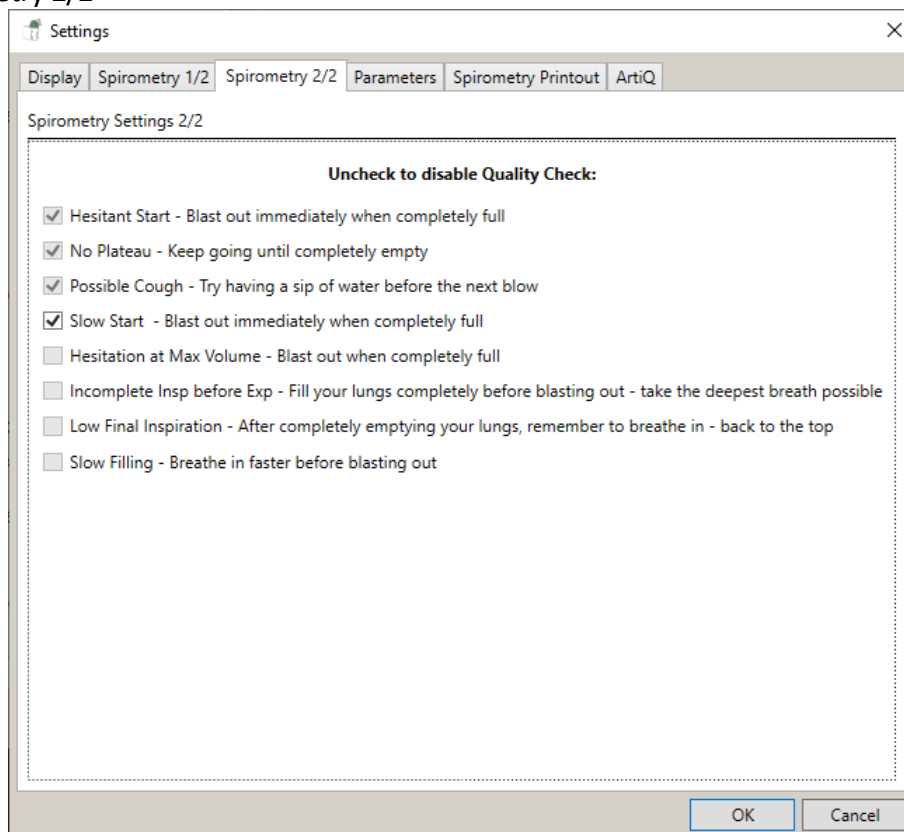


www.numed.co.uk



info@numed.co.uk

6. Spirometry 2/2



DEDICATION • INNOVATION • TRUST

Alliance House, Roman Ridge Road, Sheffield, S9 1GB Telephone: 0114 243 3896 Fax: 0114 243 3413



www.numed.co.uk

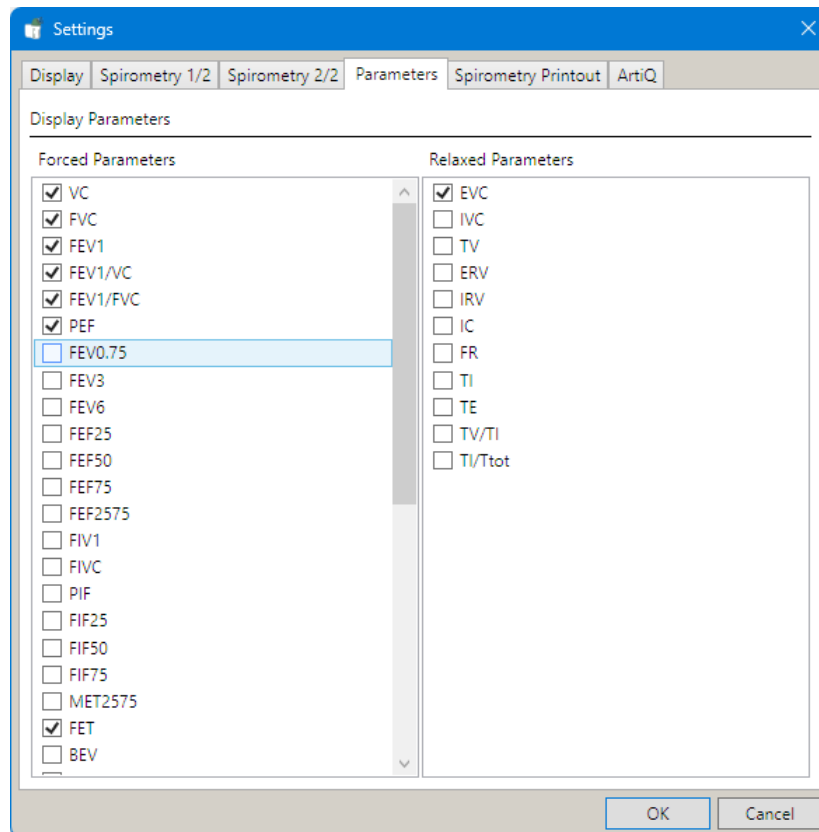


info@numed.co.uk

Numed Holdings Limited T/A Numed Healthcare, Company Reg No 01302868

Directors: M K Healy & S J Healy

a. Parameters



DEDICATION • INNOVATION • TRUST

Alliance House, Roman Ridge Road, Sheffield, S9 1GB Telephone: 0114 243 3896 Fax: 0114 243 3413



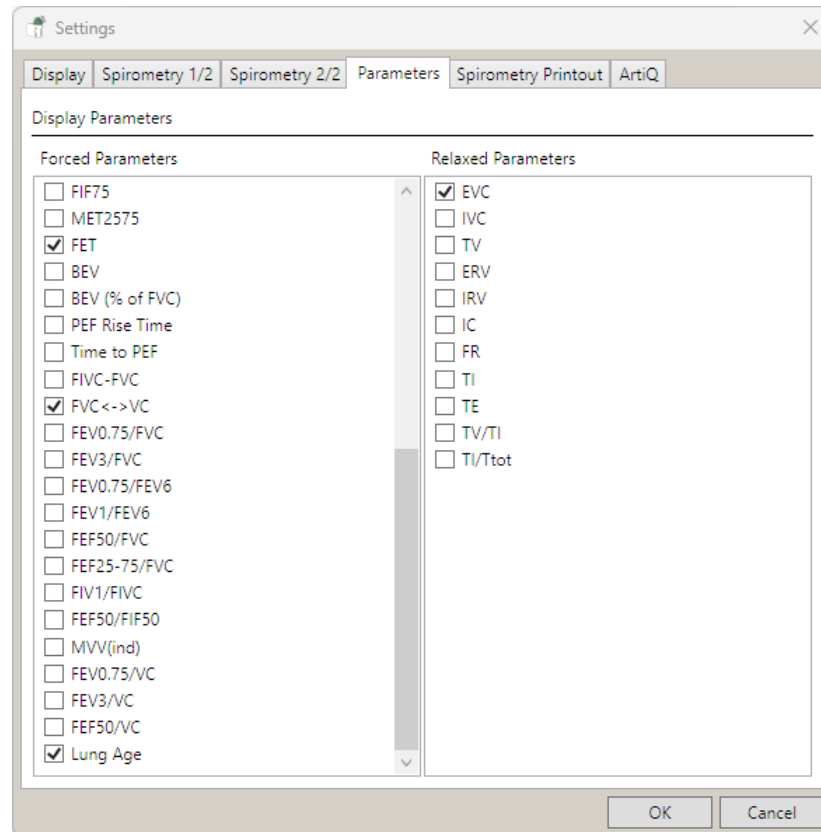
www.numed.co.uk



info@numed.co.uk

Numed Holdings Limited T/A Numed Healthcare, Company Reg No 01302868

Directors: M K Healy & S J Healy



DEDICATION • INNOVATION • TRUST

Alliance House, Roman Ridge Road, Sheffield, S9 1GB Telephone: 0114 243 3896 Fax: 0114 243 3413

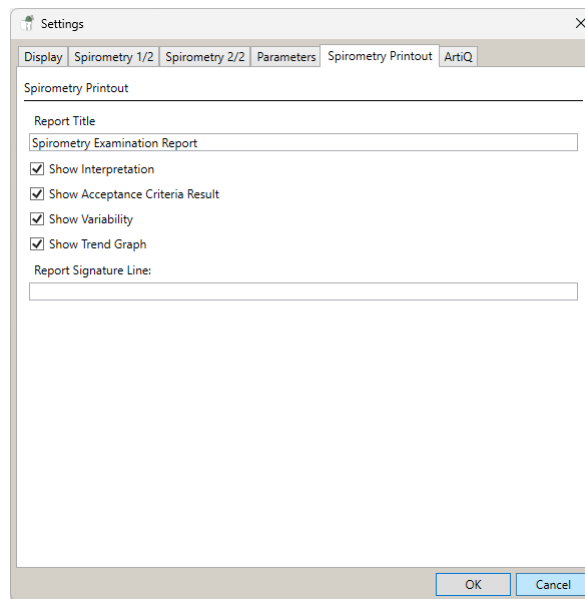


www.numed.co.uk

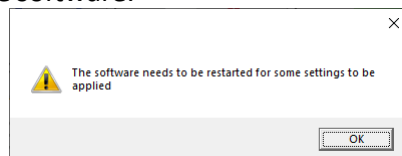


info@numed.co.uk

7. Spirometry Printout, once configured click OK. The ArtiQ tab is only used if you have purchased the ArtiQ integration.



8. Click OK, then close the software.



You are now able to use the SpiroConnect spirometer, if you have any queries about the settings. issues or problems connecting the device please contact Numed support via <https://www.numed.co.uk/support> or by calling 0114 399 0010 option 3.

DEDICATION • INNOVATION • TRUST

Alliance House, Roman Ridge Road, Sheffield, S9 1GB Telephone: 0114 243 3896 Fax: 0114 243 3413



www.numed.co.uk



info@numed.co.uk